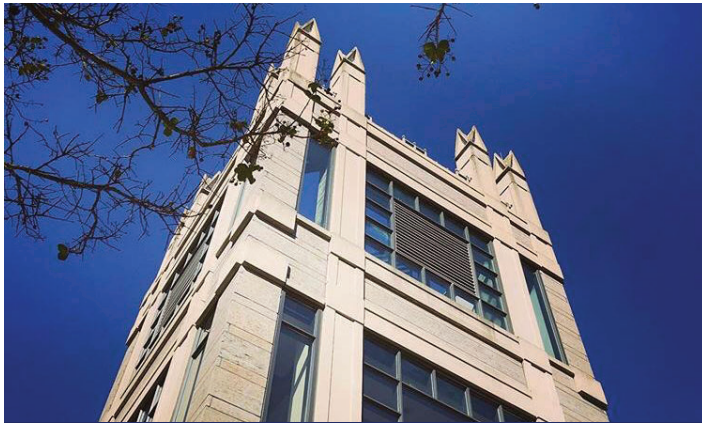


Faculty Guide 2020-2021

The faculty at Duke University's Sanford School of Public Policy have earned national and international recognition for excellence in research, policy engagement and teaching. We have a diverse mix of academic scholars and professors of the practice whose practical experience in top leadership roles enhances the classroom experience.

Faculty members collaborate across disciplines to explore questions relating to income inequality, obesity and hunger, energy policy, child neglect and abuse, access to health care, democratization, foreign policy and many other important global concerns.

Learn more about our faculty at sanford.duke.edu.



FACULTY BY FIELD

Education & Social Policy	 34
Civil Society, Institutional Design & Public Finance	 23
Leadership, Ethics & Public Values	 28
International Development	 21
Health & Population	 25
Environment & Energy	 12
Global Governance, Security & Foreign Policy	 13

Includes 68 core faculty members; total exceeds 100% because some work in multiple areas. Secondary faculty and adjuncts not represented.

Faculty Administration



JUDITH KELLEY: Dean, Sanford School of Public Policy; ITT/Terry Sanford Professor of Public Policy; Professor of Political Science, Bass Fellow PhD (Public Policy), Harvard University, 2001
Pronouns: She/her/hers

Research: International relations and institutions; international law and norms; international election monitoring; democracy promotion; human rights; human trafficking; the role of external actors in domestic political reforms



CORINNE M. KRUPP: Associate Dean for Academic Programs; Professor of the Practice of Public Policy PhD (Economics), University of Pennsylvania, 1990
Pronouns: She/her/hers

Research: International trade policy; antidumping law and firm behavior; competition policy; European Union trade and finance issues; economic development



PHILIP M. NAPOLI: Senior Associate Dean for Faculty and Research; James R. Shepley Professor of Public Policy; Professor of International Comparative Studies; Faculty Affiliate, DeWitt Wallace Center for Media & Democracy
PhD (Mass Communication, Telecommunications), Northwestern University, 1997

Research: Media policy and regulation; journalism; media and democracy; politics of policy research; media institutions

Academic Program Directors



SARAH BERMEO: Director of Graduate Studies, Master of International Development Program (MIDP); Associate Professor of Public Policy and Political Science; Associate Director, Duke Center for International Development
PhD (Politics), Princeton University, 2008

Research: International political economy; international development; relations between industrialized and developing countries; foreign aid; trade agreements; migration; Central America



CHRISTINA M. GIBSON-DAVIS: Director of Undergraduate Studies; Professor of Public Policy and Sociology; Faculty Affiliate, Center for Child and Family Policy
PhD (Human Development and Social Policy), Northwestern University, 2001

Research: Causes and consequences of marriage for low-income families; health and well-being of low-income families and children; wealth inequality among households with children



SUBHRENDU K. PATTANAYAK: Director of Graduate Studies, PhD Program; Oak Foundation Professor of Environmental and Energy Policy; Professor of Public Policy, Economics, Environment, and Global Health
PhD (Environmental Economics), Duke University, 1997

Research: Environment and development economics; energy access; tropical forests; biodiversity; water supply and sanitation; global environmental health; diarrhea and piped water; malaria and bed nets; respiratory infections and cook stoves



KENNETH S. ROGERSON: Director of Graduate Studies, Master of Public Policy (MPP); Professor of the Practice of Public Policy; Faculty Affiliate, DeWitt Wallace Center for Media & Democracy; Co-director, Policy, Journalism and Media Studies Certificate Program
PhD (Political Science), University of South Carolina, 2000
Pronouns: He/him/his

Research: Technology policy; international communications; media; journalism

Core Sanford Faculty Members



BILL ADAIR: Knight Professor of the Practice of Journalism and Public Policy; Director, DeWitt Wallace Center for Media & Democracy
BA (Political Science), Arizona State University, 1985
Pronouns: He/him/his
Research: Political reporting and fact-checking; automation and new technologies in journalism



CATHERINE ADCOCK ADMAY: Senior Lecturer in Public Policy; Assistant Director of Undergraduate Studies; Faculty Affiliate, Duke Global Health Institute
JD, Yale University, 1992
Pronouns: She/her/hers
Research: Human rights; governance and accountability in promoting inclusive development; global health; peacebuilding; the arts and social imagination



ABDULLAH T. ANTEPLI: Associate Professor of the Practice of Public Policy and Interfaith Relations
MA (Islamic Studies and Christian-Muslim Relations), Hartford Seminary, 2005
Pronouns: He/him/his
Research: Religious peace-building, cross-religious interfaith work, faith-based diplomacy



LESLIE BABINSKI: Associate Research Professor of Public Policy; Director, Center for Child and Family Policy
PhD (Education and School Psychology), University of California at Berkeley, 1993
Pronouns: She/her/hers
Research: Educational interventions; English learners; teacher professional development; child development; program evaluation



CAROLYN BARNES: Assistant Professor of Public Policy and Political Science
PhD (Public Policy and Political Science), University of Michigan, 2014
Pronouns: She/her/hers
Research: Nonprofit service provision; social welfare policy and implementation; poverty and inequality; race and urban politics; state/local politics; political behavior



NATHAN A. BOUCHER: Assistant Research Professor of Public Policy; Assistant Professor Track V, Population Health Sciences and Medicine
DrPH (Public Health), State University of New York, 2015
Research: Qualitative and mixed methods research on caregivers' and healthcare consumers' needs in the context of advanced stage illness; palliative and hospice care delivery; veterans' care delivery



ANTHONY S. BROWN: Professor of the Practice of Public Policy
MBA, Harvard University, 1968
Research: Teaching and experiential learning pedagogies; social entrepreneurship; enterprising leadership; leadership development; socially responsible businesses



KELLY BROWNELL: Dean Emeritus, Sanford School of Public Policy; Robert L. Flowers Professor of Public Policy; Professor of Psychology and Neuroscience; Professor of Psychiatry and Behavioral Sciences; Director, World Food Policy Center
PhD (Clinical Psychology), Rutgers University, 1977
Pronouns: He/him/his
Research: Food policy; food systems; obesity prevention; health; public health policy (*on leave, fall 2020*)



NICHOLAS CARNES: Creed C. Black Associate Professor of Public Policy and Political Science
PhD (Politics and Social Policy), Princeton University, 2011
Pronouns: He/him/his
Research: Economic and social class inequality; political representation; legislative decision making; candidate recruitment



CHARLES T. CLOTFELTER: Z. Smith Reynolds Professor of Public Policy; Professor of Economics and Law; Faculty Affiliate, Center for Child and Family Policy
PhD (Economics), Harvard University, 1974
Pronouns: He/him/his
Research: Economics of education; public finance



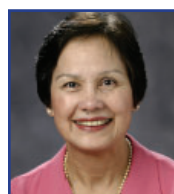
WILLIAM A. DARITY, JR.: Samuel DuBois Cook Professor of Public Policy, African and African American Studies, and Economics; Director, Samuel DuBois Cook Center on Social Equity
PhD (Economics), Massachusetts Institute of Technology, 1978
Research: Stratification economics; inequality by race, class and ethnicity; North-South theories of development and trade; reparations and restitution; colorism; discrimination; race and identity; social psychology and unemployment exposure; schooling and the racial achievement gap; financial crises in developing countries



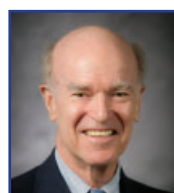
KENNETH A. DODGE: William McDougall Professor of Public Policy; Professor of Psychology and Neuroscience; Faculty Fellow, Center for Child and Family Policy; Director, Family Connects
PhD (Clinical Psychology), Duke University, 1978
Research: Development and prevention of violence in children and families; violence prevention policy



FERNANDO FERNHOLZ: Professor of the Practice of Public Policy, Duke Center for International Development
PhD (Economics), Boston University, 2000
Research: Investment appraisal; risk analysis and management; public finance; international economics; trade, external debt and finance; public-private partnerships; economic growth and development



ROSEMARY FERNHOLZ: Senior Research Scholar and Lecturing Fellow of Public Policy, Duke Center for International Development
PhD (Political Economy and Government), Harvard University, 1998
Pronouns: She/her/hers
Research: International development; development management; social policy; indigenous peoples



JOEL L. FLEISHMAN: Professor of Law and Public Policy; Director, Samuel and Ronnie Heyman Center for Ethics, Public Policy, and the Professions; Director, Center for Strategic Philanthropy and Civil Society
LLM, Yale University, 1960; JD, UNC-Chapel Hill, 1959
Pronouns: He/him/his
Research: Nonprofit and foundation governance and accountability; foundation strategic choice-making and impact measurement; special strategies appropriate to limited-life foundations; ethics and public policy



ANNA GASSMAN-PINES: WLF Bass Connections Associate Professor of Public Policy and Psychology and Neuroscience
PhD (Psychology), New York University, 2007
Pronouns: She/her/hers
Research: Development of children in low-income families; low-wage work and family life; poverty and inequality; social policy



LISA GENNETIAN: Pritzker Associate Professor of Early Learning Policy Studies
PhD (Economics) Cornell University, 1998
Pronouns: She/her/hers
Research: Child poverty; social policy and economics; early childhood interventions; causal methods



BETH GIFFORD: Associate Research Professor of Public Policy and Pediatrics; Faculty Affiliate, Center for Child and Family Policy; Duke Population Research Institute and Duke-Robert J. Margolis MD Center for Health Policy
PhD (Health Policy and Administration and Demography), Pennsylvania State University, 2005
Research: Child maltreatment; children and the law; education; intergenerational effects of criminal justice policies, veteran health



INDERMIT GILL: Professor of the Practice of Public Policy
PhD (Economics) University of Chicago, 1989
Research: Economic growth; public finance; social security; economic geography; Europe



KRISTIN A. GOSS: Kevin D. Gorter Professor of Public Policy and Political Science; Director, Duke in DC--Policy, Leadership & Innovation; Director, Center for the Study of Philanthropy and Voluntarism; Faculty Affiliate, Center for Strategic Philanthropy and Civil Society, Hart Leadership Program and Duke Center for Firearms Law
PhD (Political Science), Harvard University, 2003

Pronouns: She/her/hers

Research: Civic and political participation; role of voluntary associations, foundations and philanthropists in public policy; women and politics; politics of gun control; agenda setting; public opinion; interest groups



ASHER HILDEBRAND: Associate Professor of the Practice of Public Policy
MPA (International Relations), Princeton University, 2009
Pronouns: He/him/his
Research: American politics; legislative institutions; civic participation and advocacy; globalization and governance; U.S. foreign policy (*on leave, fall 2020*)



DAVID HOFFMAN: Steed Family Professor of the Practice of Cybersecurity Policy; Senior Lecturing Fellow of Law
JD, Duke University, 1993
Pronouns: He/him/his
Research: Implications of cyber policy and law in national security, health data, gender violence and access to information



BRUCE W. JENTLESON: William Preston Few Professor of Public Policy, Professor of Political Science
PhD (Government), Cornell University, 1983
Pronouns: He/him/his
Research: American foreign policy; international relations; international security; conflict prevention and resolution; globalization and governance; Middle East peace and security



MARC JEULAND: Associate Professor of Public Policy, Global Health, Environment, and Civil and Environmental Engineering; Director, Duke Energy Access Project
PhD (Environmental Sciences and Engineering), UNC, Chapel Hill, 2009
Pronouns: He/him/his

Research: Nonmarket valuation; preferences for environmental services; cost-benefit and cost effectiveness analysis; water and sanitation; demand for environmental health; the planning and management of trans-boundary water resources; the impacts and economics of climate change; energy and development



MATTHEW S. JOHNSON: Assistant Professor of Public Policy and Economics
PhD (Economics), Boston University, 2016
Pronouns: He/him/his

Research: Labor and public economics; organizational economics



ROY KELLY: Professor of the Practice of Public Policy, Duke Center for International Development
PhD (Urban Planning), Harvard University, 1985

Research: Fiscal decentralization; public financial management; investment appraisal; local government finance; property taxation



SARAH A.G. KOMISAROW: Assistant Professor of Public Policy and Economics; Faculty Affiliate, Center for Child and Family Policy
PhD (Economics) University of Chicago, 2016
Pronouns: She/her/hers

Research: Economics of education; K-12 education policy; educational inequalities (*on leave, spring 2021*)



ANIRUDH KRISHNA: Edgar T. Thompson Professor of Public Policy and Political Science
PhD (Government), Cornell University, 2000

Research: Poverty; inequality; social mobility; governance
(*on leave, spring 2021*)



JENNIFER LANSFORD: Research Professor of Public Policy; Faculty Affiliate, Center for Child and Family Policy; Faculty Affiliate, Duke Population Research Institute
PhD (Developmental Psychology), University of Michigan, Ann Arbor, 2000
Pronouns: She/her/hers

parenting

Research: Youth violence prevention; peer influence;



POPE "MAC" MCCORKLE: Professor of the Practice of Public Policy; Director, Polis: Center for Politics
JD, Duke University, 1984

Research: Politics of the policy process; campaigns and elections; political history and theory



ROBYN MEEKS: Assistant Professor of Public Policy; Faculty Fellow, Duke Energy Initiative
PhD (Public Policy), Harvard University, 2012
Pronouns: She/her/hers

Research: Environmental and energy economics; development economics (*on leave, fall 2020*)



M. GIOVANNA MERLI: Professor of Public Policy and Sociology; Research Professor of Global Health; Director, Duke Center for Population Research; Director, Duke Population Research Institute PhD (Demography), University of Pennsylvania, 1996
Research: Health and population in developing countries; migration and immigration; social networks; HIV/AIDS modeling; sampling hard-to-reach populations; China



SIMON MILES: Assistant Professor of Public Policy, Slavic and Eurasian Studies and History PhD (History), University of Texas at Austin, 2017
 Pronouns: He/him/his
Research: Diplomatic history; the Cold War; international relations and security; U.S. foreign policy; Soviet Union and Russia



NATALIA MIROVITSKAYA: Associate Professor of the Practice of Public Policy, Duke Center for International Development PhD (Economics), Russian Academy of Sciences, 1980
Research: Sustainable development; international resource and environmental policy; conflict-sensitive development; global gender issues



ERIC MLYN: Lecturer in Public Policy; PhD (Political Science), University of Minnesota, 1991
 Pronouns: He/him/his
Research: Role of civic engagement in American higher education; the relationship between civic and political engagement; social innovation; Trumpism and American higher education



MANOJ MOHANAN: Associate Professor of Public Policy and Economics, Associate Research Professor of Global Health; Faculty Research Scholar, Duke Population Research Center. PhD (Health Policy), Harvard University, 2009
 Pronouns: He/him/his
Research: Health economics; health policy; development economics; applied microeconomics



CLARA G. MUSCHKIN: Associate Research Professor of Public Policy; Faculty Director, North Carolina Education Research Data Center; Director, Child Policy Research Certificate Program; Faculty Affiliate, Center for Child and Family Policy PhD (Sociology), Duke University, 1989
 Pronouns: She/her/hers
Research: Education policy; academic performance and student behavior; peer influence in schools; educational inequalities; early education



JENNI W. OWEN: Senior Lecturer in Public Policy MPA (Public Administration), Harvard University, 1996
Research: The policymaking process, evidence-based policy, and researcher-policymaker interaction; application of research to real-world policy and practice settings; education and social policy (*on leave, through fall 2022*)



JAY A. PEARSON: Assistant Professor of Public Policy; Director, Global Inequality Research Initiative; Faculty Affiliate, Center for Health Policy & Inequalities Research; Duke Global Health Institute PhD (Health Behavior and Health Education), University of Michigan, 2006
 Pronouns: He/him/his
Research: Social determinants of population health differences; identity construction; stratification; social bias, including supremacy, oppression, privilege and discrimination

differences; identity construction; stratification; social bias, including supremacy, oppression, privilege and discrimination



GUNTHER PECK: Fred W. Shaffer Associate Professor of History and Public Policy; Director, Hart Leadership Program PhD (History), Yale University, 1994
Research: 19th- and 20th-century American social and cultural history; comparative immigration and labor studies; environmental history



MATTHEW PERALUT: Associate Professor of the Practice of Public Policy; Director, Center on Science & Technology Policy JD, Harvard University, 2008; MPP, Duke University, 2008
 Pronouns: He/him/his
Research: Technology policy; law and surveillance reform; telecommunications; human rights; competition; tax and intellectual property



ALEXANDER PFAFF: Professor of Public Policy, Economics and Environment PhD (Economics), Massachusetts Institute of Technology, 1995
 Pronouns: He/him/his
Research: Environmental and natural resource economics and policy; development and applied microeconomics and policy



DIRK PHILIPSEN: Associate Research Professor of Public Policy and History; Senior Fellow, Kenan Institute for Ethics; Co-director, Sustainability Engagement Program PhD (U.S. Comparative Social and Economic History), Duke University, 1992
 Pronouns: He/him/his
Research: Economic history; economic performance indicators; ethics and public service; U.S. politics and public values



NOAH PICKUS: Associate Provost; Dean of Curriculum and Faculty Development, Duke Kunshan University; Professor of the Practice of Public Policy PhD (Political Science), Princeton University, 1995
Research: Leadership, ethics, and public service; immigration and citizenship



BILLY PIZER: Susan B. King Professor of Public Policy; Professor of Economics and Environment; Professor of Environmental Science and Policy, Duke Kunshan University; Faculty Fellow, Nicholas Institute for Environmental Policy Solutions PhD (Economics), Harvard University, 1996
 Pronouns: He/him/his
Research: Environmental regulation; climate change and energy economics; energy policy



PHYLLIS POMERANTZ: Professor of the Practice of Public Policy, Duke Center for International Development PhD (International Relations), Tufts University, 1978
 Pronouns: She/her/hers
Research: Aid effectiveness; governance, leadership and development; global public goods and programs; program design for poverty reduction



DAVID E. PRICE: Professor of Political Science and Public Policy PhD (Political Science), Yale University, 1969
Research: Congressional policymaking; ethics and public policy; American political parties (*on leave, serving in the U.S. House of Representatives 4th District*)



VINCENT E. PRICE: President, Duke University; Walter Hines Page University Professor of Public Policy and Political Science
PhD (Communication), Stanford University, 1987
Research: Public opinion; social influence; and political communication



TIMOTHY H. PROFETA: Associate Professor of the Practice of Public Policy; Director, Nicholas Institute for Environmental Policy Solutions
JD, Duke University, 1997
Research: Climate change policy design; analysis of legal authority to address climate and energy challenges; the Clean Air Act; adaptive use of current environmental laws for evolving environmental challenges



MARCOS A. RANGEL: Associate Professor of Public Policy and Economics
PhD (Economics), University of California at Los Angeles, 2004
Pronouns: He/him/his
Research: Education and social policy; health and population; international development



DEONDRA ROSE: Assistant Professor of Public Policy and Political Science; Director of Research, Polis: Center for Politics
PhD (Government), Cornell University, 2012
Pronouns: She/her/hers
Research: Higher education policy; policy feedback; inequality; the politics of gender, race and class; American political development; political engagement



DAVID SCHANZER: Professor of the Practice of Public Policy; Director, Triangle Center on Terrorism and Homeland Security
JD, Harvard University, 1989
Pronouns: He/him/his
Research: Counterterrorism strategy, policy and law; homeland security



STEVEN E. SEXTON: Mark and Lynn Florian Assistant Professor of Public Policy; Professor of Economics; Faculty Fellow, Duke Energy Initiative
PhD (Agricultural and Resource Economics), University of California at Berkeley, 2012
Research: Energy and environmental economics; behavioral economics; climate policy; agricultural economics; industrial organization; applied econometrics



GANGADHAR PRASAD (GP) SHUKLA: Professor of the Practice of Public Policy, Duke Center for International Development
PhD (Political Economy and Government), Harvard University, 1993
Research: Tax analysis and revenue forecasting; public finance for open economies; investment appraisal; taxation of natural resources



MALLORY E. SORELLE: Assistant Professor of Public Policy
PhD (Government) Cornell University, 2016
Pronouns: She/her/hers
Research: Inequality, American political economy, political engagement, policy feedback, consumer finance, social welfare policy, regulation, mixed methods research



SARA SUTHERLAND: Lecturer in Public Policy
PhD (Environmental Science and Management)
University of California, Santa Barbara, 2016
Pronouns: She/her/hers
Research: Environmental economics, the political economy of natural resource management, fisheries and water management



DONALD H. TAYLOR: Professor of Public Policy, Community and Family Medicine and Nursing; Director, Social Science Research Institute; Faculty Affiliate, Margolis Center for Health Policy
PhD (Health Policy and Administration), UNC, Chapel Hill, 1995
Pronouns: He/him/his
Research: Aging and long-term care; health policy



THOMAS W. TAYLOR: Professor of the Practice of Public Policy
JD, UNC, Chapel Hill, 1969
Pronouns: He/him/his
Research: National and homeland security; civil-military relations; constitutional and intelligence law; management and leadership



PETER A. UBEL: Dennis T. McLawhorn University Professor of Business Administration; Professor of Medicine and Public Policy; Associate Faculty Director, Health Sector Management; Director, Duke-UNC USDA Center for Behavioral Economics and Healthy Food Choice Research
MD, University of Minnesota, 1988
Research: Role of values and preferences in health-care decision making; ethics in health care, such as informed consent and health-care rationing



JAMES W. VAUPEL: Research Professor of Public Policy; Co-director, Center for Population, Health and Aging; Founding Director, Max Planck Institute for Demographic Research
PhD (Public Policy), Harvard University, 1978
Research: Demography of aging; mortality at advanced ages; environmental and genetic plasticity of mortality rates



KATHRYN WHETTEN: Professor of Public Policy and Global Health; Director, Center for Health Policy & Inequalities Research; Co-Director, Duke Sexual and Gender Minority Health Program; Research Director, Hart Fellows Program; Faculty Affiliate, Duke Global Health Institute
PhD (Health Policy and Administration), UNC, Chapel Hill, 1994

Pronouns: They/them/theirs

Research: Health disparities; HIV/AIDS; substance abuse; mental health; trauma; orphaned and separated children; sexual and gender minorities

**SANFORD RANKS
AMONG TOP 5 PUBLIC
POLICY SCHOOLS
FOR RESEARCH
PUBLICATION OUTPUT**

Professors Emeriti

ROBERT CONRAD: Associate Professor Emeritus of Public Policy and Economics PhD (Economics), University of Wisconsin, Madison, 1978

Research: Public finance; natural resource economics; mineral taxation

PHILIP J. COOK: ITT/Terry Sanford Professor Emeritus of Public Policy; Professor Emeritus of Economics and Sociology PhD (Economics), University of California, Berkeley, 1973

Research: Criminal justice policy; public health policy and social policy; regulation of alcohol, guns, and gambling; violence prevention; truancy prevention

GRAHAM GLENDAY: Professor Emeritus of the Practice of Public Policy; Co-director, International Taxation Program, Duke Center for International Development PhD (Public Policy), Harvard University, 1982

Research: Public finance; international tax policy administration; economic development

ALEX HARRIS: Professor of the Practice Emeritus of Public Policy and Documentary Studies; Creative Director, Lewis Hines Documentary Fellows Program BA (Psychology), Yale University, 1971

Research: Documentary photography and writing; patients living with brain cancer; Hispanic culture in northern New Mexico; poverty and housing in North Carolina; media coverage of humanitarian challenges; aging and retirement in the United States; José Martí and Cuba; Edward O. Wilson and the U.S. Gulf Coast

SHERMAN JAMES: Susan B. King Professor Emeritus of Public Policy PhD (Social Psychology), Washington University in St. Louis, 1973

Research: Social determinants of U.S. racial and ethnic health disparities in health and health care; community-based and public policy interventions to reduce racial and ethnic health disparities

JAMES A. JOSEPH: Professor Emeritus of the Practice of Public Policy; former U.S. Ambassador to South Africa MDiv, Yale University, 1963

Research: Ethics in public life and leadership paradigms; philanthropy; civil society

ROBERT KORSTAD: Professor Emeritus of Public Policy PhD (History), UNC, Chapel Hill, 1987

Research: Social policy from an historical perspective; labor; poverty; civil rights

BRUCE R. KUNIHOLM: Dean Emeritus of the Sanford School of Public Policy; University Distinguished Service Professor Emeritus of Public Policy; Professor Emeritus of History PhD (History), Duke University, 1976

Research: U.S. policy in the Middle East; U.S. diplomatic history; national security; uses of history and public policy

HELEN F. LADD: Susan B. King Professor Emeritus of Public Policy; Professor Emeritus of Economics; Faculty Affiliate, Center for Child and Family Policy PhD (Economics), Harvard University, 1974

Research: Education policy in the U.S. and other countries; state and local public finance

FRANCIS LETHEM: Professor Emeritus of the Practice of Public Policy PhD (Economics), Neuchatel University, 1967 Pronouns: He/him/his

Research: Institutional design; project design; capacity building towards sustainable development; conflict prevention

ELLEN MICKIEWICZ: James R. Shepley Emeritus Professor of Public Policy; Professor Emeritus of Political Science PhD (Political Science), Yale University, 1965

Research: Political communication, democratization and political psychology; using cognitive science theory to research heuristics employed in processing news, especially under conditions of limited information, as in Russia and parts of Eastern Europe

Faculty Members with Secondary Appointments in Public Policy

MATTHEW D. ADLER: Richard A. Horvitz Professor of Law; Professor of Philosophy and Economics; Director, Center for Law, Economics and Public Policy JD, Yale, 1991

DAN ARIELY: James B. Duke Professor of Behavioral Economics; Professor of Economics and Business Administration PhD (Business Administration), Duke University, 1998 PhD (Cognitive Psychology), UNC, Chapel Hill, 1996

CHRISTOPHER BAIL: Douglas and Ellen Lowey Professor of Sociology PhD (Sociology), Harvard University, 2011

EDWARD J. BALLEISEN: Vice Provost for Interdisciplinary Studies; Professor of History; Senior Fellow, Kenan Institute for Ethics PhD (History), Yale, 1995 Pronouns: He/him/his

LORI BENNEAR: Juli Plant Grainger Associate Professor of Environmental Economics and Policy PhD (Public Policy), Harvard University, 2004

CURTIS BRADLEY: The William Van Alstyne Professor of Law JD, Harvard Law School, 1988

WILLIAM CHAFE: The Alice Mary Baldwin Professor Emeritus of History PhD (History), Columbia University, 1971

AARON CHATTERJI: Professor of Business Administration PhD (Business Administration) University of California at Berkeley, 2006

PETER D. FEAVER: Professor of Political Science; Director, Duke Program in American Grand Strategy PhD (Political Science), Harvard University, 1990 Pronouns: He/him/his

BRANDON GARRETT: L. Neil Williams, Jr. Professor of Law JD, Columbia University, 2001

SUSANNE B. HAGA: Associate Professor in Medicine and Biology PhD (Human Genetics), University of Maryland, Baltimore, 1999 Pronouns: She/her/hers

ANGEL LUIS HARRIS: Professor of Sociology; Faculty Research Scholar, DuPRI Population Research Center; Faculty Affiliate, Duke Center for Child and Family Policy PhD (Public Policy and Sociology) University of Michigan, 2005

ROBERT G. HEALY: Professor Emeritus of Environmental Policy, Nicholas School of the Environment Ph.D. (Economics) University of California at Los Angeles, 1972

D. SUNSHINE HILLYGUS: Professor of Political Science; Director, Duke Initiative on Survey Methodology PhD (Political Science) Stanford University, 2003

LISA KEISTER: Bass Fellow, Professor of Sociology PhD (Sociology) Cornell University, 1997

NANCY MACLEAN: William H. Chafe Professor of History PhD (History), University of Wisconsin-Madison, 1989

EDMUND MALESKY: Professor of Political Science; Director of the Duke Center for International Development PhD (Political Science), Duke University, 2004

PAULA D. MCCLAIN: Dean of the Graduate School; Vice Provost for Graduate Education; Professor of Political Science PhD (Political Science), Howard University, 1977

MARK MCCLELLAN: Robert J. Margolis Professor of Business, Medicine, and Policy; Professor of the Practice of Business Administration; Director, Duke-Robert J. Margolis MD Center for Health Policy PhD (Economics) Massachusetts Institute of Technology, 1993

MICHAEL H. MERSON: Wolfgang Joklik Professor of Global Health; Professor of Medicine and Community and Family Medicine; MD, State University of New York at Brooklyn, 1970

MEGAN MULLIN: Associate Professor of Environmental Politics and Political Science PhD (Political Science) University of California, Berkeley, 2005

MICHAEL C. MUNGER: Professor of Political Science and Economics; Director, Philosophy, Politics and Economics Program PhD (Economics), Washington University, 1984 Pronouns: They/them/theirs

BRIAN MURRAY: Research Professor, NSOE; Director, Duke Energy Initiative PhD (Resource Economics and Policy) Duke University, 1992

THOMAS NECHYBA: Professor of Economics PhD (Economics), University of Rochester, 1994

ALLISON G. ROBERTSON: Associate Professor in Psychiatry and Behavioral Sciences PhD (Health Policy and Management), UNC, Chapel Hill, 2009

CHRISTOPHER SCHROEDER: Professor Emeritus of Law; Director, Program in Public Law JD, University of California School of Law, Berkeley, 1974

DAVID SIEGEL: Professor of Political Science PhD (Political Economics), Stanford University, 2006

SIM SITKIN: Michael W. Krzyzewski University Professor in Leadership; Professor of Management; Director, Behavioral Science and Policy Center PhD (Organizational Behavior), Stanford University, 1986

FRANK SLOAN: J. Alexander McMahon Professor Emeritus of Health Policy and Management; Professor Emeritus of Economics PhD (Economics), Harvard University, 1969

CORRINA SORENSON: Assistant Professor in Population Health Sciences and Medicine PhD, London School of Economics, 2015

DUNCAN THOMAS: Norb F. Schaefer Professor of International Studies; Professor of Economics; Professor of Global Health PhD (Economics), Princeton University, 1986

JEFFREY VINCENT: Clarence F. Korstian Professor of Forest Economics and Management PhD, Yale University, 1988

ERIKA S. WEINTHAL: Professor of Environmental Policy NSOE PhD (Political Science), Columbia University, 1998 Pronouns: She/her/hers

ERIK WIBBELS: Robert O. Keohane Professor of Political Science PhD, University of New Mexico, 2000

JONATHAN B. WIENER: William R. and Thomas L. Perkins Professor of Law; Professor of

Environmental Policy, Duke Kunshan JD, Harvard University, 1987

NORBERT WILSON: Professor of Food, Economics and Community, Divinity PhD (Agricultural and Resource Economic) University of California, Davis, 1999

CHARLENE WONG: Associate Professor of Pediatrics MD, Emory University School of Medicine, 2010

GAVIN YAMEY: Professor of the Practice in Global Health MPH, London School of Hygiene and Tropical Medicine, 2010 MBBS, University College of London, 1994

S. YOUSUF ZAFAR: Associate Professor of Medicine, Medical Oncology and Population Health Sciences; Member, Duke Cancer Institute; Affiliate, Duke Global Health Institute MD University of Toledo, 2002 Sanford School/Public Policy

Other Affiliated Faculty

TERRY ALLEBAUGH: Adjunct Instructor MDiv, Duke University, 1983

TOM ALLIN: Visiting Professor of the Practice of Public Policy BS (Economics) Duke University, 1971

DAVID ANDERSON: Adjunct Instructor MS (Public Policy and Management), Carnegie Mellon University

WILLIAM J. BARBER II: Adjunct Instructor MDiv, Duke University, 1989, PhD (Divinity), Drew University, 2003

MARIEL BEASLEY: Adjunct Instructor MPP, Duke University, 2013

DOUGLAS BROOK: Visiting Professor PhD (Public Policy), George Mason University, 2001

GERRY COHEN: Adjunct Instructor JD, University of North Carolina at Chapel Hill, 1975 Pronouns: He/him/his

PAUL DILLON: Visiting Professor of the Practice MS, Northern Illinois University, 1969

JACKSON EWING: Adjunct Associate Professor of Public Policy, Senior Fellow, Nicholas Institute for Environmental Policy Solutions PhD (International Relations) Bond University, 2010

TARA LYNNE FIKES: Adjunct Instructor DPA, University of Southern California Pronouns: She/her/hers

PENNY FLEMING: Adjunct Instructor MPA, The American University, 1978 Pronouns: She/her/hers

JOHN A. FORLINES, III: Executive in Residence JD Duke University 1982

ANTHONY GAD: Adjunct Instructor MPP, Georgetown University. 2004

ERIK GARR: Accenture Visiting Professor of the Practice MPP, University of Chicago, 2005

MOLLY GOLDWASSER: Adjunct Instructor Ed.D, Vanderbilt University, 2014

WIB GULLEY: Adjunct Instructor JD, Northeastern University, 1981

ADAM HOLLOWELL: Adjunct Professor PhD (Theological Ethics), University of Edinburgh, 2009 Pronouns: He/him/his

LYNN HOLMES: Visiting Professor of the Practice JD, Georgetown University, 1980

JOHN HOOD: Adjunct Instructor MA (Political Science and Philosophy), UNC Greensboro

SUSAN KATZENELSON: Visiting Professor of the Practice of Public Policy MA (Criminology), University of Pennsylvania, 1972 Pronouns: She/her/hers

LYDIA LAVELLE: Adjunct Instructor JD, North Carolina Central University, 1993 Pronouns: She/her/hers

STANLEY LITOW: Accenture Visiting Professor of the Practice BA (Political Science), New York University, 1968

PATRICK MCHUGH: Adjunct Instructor PhD (Political Science), UNC, Chapel Hill, 2010

AARON MCKETHAN: Visiting Assistant Professor PhD (Public Policy Analysis), UNC, Chapel Hill

FLOYD MCKISSICK: Adjunct Instructor JD, Duke University, 1984

BLYTHE MEYER: Adjunct Instructor BA (Graphic Design), North Carolina State University, 2014

ANDREW OLSON: Adjunct Instructor MPP (Health Policy), Duke University, 2014

ZACHARY OSBORNE: Adjunct Instructor MBA, Stanford University, 2013

KAREN PRICE: Adjunct Instructor MFA, University of Southern California, 2002

JOHN QUINTERNO: Visiting Professor of the Practice MPA, UNC, Chapel Hill, 2002 Pronouns: He/him/his

LEE HARRIS ROBERTS: Adjunct Instructor
JD, Georgetown University, 1994

JOSEPH SHERLOCK: Adjunct Instructor
MS (Social Policy), London School of Economics
and Political Science, 2014

ALEXANDRA SIROTA: Adjunct Instructor
MA (International Relations and Public Policy),
University of Chicago, 2004

JESSICA SPERLING: Adjunct Instructor
PhD (Sociology), City University of New York, 2014
Pronouns: She/her/hers

KATHERINE SWARTZ: Visiting Professor
PhD (Economics), University of Wisconsin-
Madison, 1976

JONATHAN WILSON-HARTGROVE:
Adjunct Instructor
M.Div., Duke University, 2006
Pronouns: He/him/his

PATRICIA DIANE WEDDINGTON:
Visiting Lecturer
M.Div., Duke University, 1976; MA (Journalism),
University of Missouri, 1977

DANIELLE ZAPOTOCZNY: Adjunct
Instructor
BA (Public Policy), Duke University, 1996
Pronouns: She/her/hers

DeWitt Wallace Center for Media & Democracy

MISHA ANGRIST: Visiting Associate Professor
of the Practice; Associate Professor of the Practice,
SSRI; Senior Fellow, Duke Initiative for Science
and Society; Associate Director, Genome Sciences
& Policy Certificate Program
PhD (Genetics), Case Western Reserve, 1996

PETER APPLEBOME: Visiting Lecturer in
Journalism and Public Policy
M.S. (Journalism), Northwestern University, 1974

JEREMY BOWERS: Visiting Lecturer in
Journalism and Public Policy
BA (Political Science), University of South
Florida, 2006

CATHERINE CLABBY: Adjunct Lecturer in
Journalism and Public Policy; Manager, Duke
Reporters' Lab
MA (American Studies), University of Iowa, 1987
Pronouns: She/her/hers

ERIC DEGGANS: Adjunct Instructor in
Journalism and Public Policy
BA (Political Science and Journalism) Indiana
University at Bloomington, 1990

BRONWEN DICKEY: Visiting Lecturer in
Journalism and Public Policy
MFA (Nonfiction Writing), Columbia University,
2009

M. TYLER DUKES: Visiting Lecturer in Jour-
nalism and Public Policy

BS (Science, Technology and Society), NC State
University, 2008

DAVID A. GRAHAM: Visiting Lecturer in
Journalism and Public Policy
AB (History), Duke University, 2009

SCOTT MCCARTNEY: Visiting Lecturer in
Journalism and Public Policy
AB (Public Policy Studies), Duke University, 1982

LYNN C. OWENS: Adjunct Instructor of
Journalism and Public Policy
PhD (Journalism and Mass Communications),
UNC, Chapel Hill, 2006
Pronouns: She/her/hers

MICHAEL SCHOENFELD: Visiting Professor
of the Practice of Public Policy; Vice President for
Public Affairs and Government Relations
MS (Public Policy), State University of New York
at Stony Brook, 1986

MARK STENCEL: Adjunct Lecturer in
Journalism and Public Policy; Co-director, Duke
Reporters' Lab
BA (Russian/Soviet Studies), University of
Virginia, 1990

MARGARET SULLIVAN: Adjunct Instructor
in Journalism and Public Policy
MS (Journalism), Northwestern University, 1980

PETER WEHNER: Pamela and Jack Egan
Visiting Professor
BA (Political Science) University of Washington,
1985

Hart Leadership Program

ALLISON JASLOW: Adjunct Professor
BS, University of Central Missouri, 2004
Pronouns: She/her/hers

LALITA KALIGOTLA: Adjunct Professor;
Associate Director
MBA Case Western Reserve University, 2002
Pronouns: She/her/hers

SUZANNE KATZENSTEIN: Instructor
PhD (Political Science) Columbia University, 2013
Pronouns: She/her/hers

STEVE SCHEWEL: Visiting Assistant Professor
PhD (Education), Duke University, 1982
Pronouns: He/him/his

SHANE STANSBURY: Visiting Lecturer in
Public Policy; Senior Lecturing Fellow in Law
JD, Columbia University, 2001
Pronouns: He/him/his

GERALD L. WILSON: Adjunct Professor
PhD (History), UNC, Chapel Hill, 1973

Duke Center for International Development (DCID)

HANS-MARTIN BOEHMER: Visiting
Professor of the Practice of Public Policy

PhD (Economics), Georgetown University, 1993

D.N.S. DHAKAL: Senior Fellow
PhD (Mineral Economics), Colorado School of
Mines, 1990

GARY GEREFFI: Professor Emeritus
PhD (Sociology), Yale University, 1980

REBECCA GOLDSMITH: Adjunct Instructor
MA (International Affairs), Columbia University,
2004

RICHARD HEMMING: Visiting Professor of
the Practice of Public Policy
PhD (Economics), University of Stirling, UK,
1977

REBECCA JOHNSON: Adjunct Instructor
MIDP, Duke University, 2011

LISA MOREAU: Adjunct Instructor
MA (Non Profit Management), Regis University,
1995

MAUREEN MORIARTY-LEMPKE: Adjunct
Professor of the Practice
PhD (Regional Planning), University of
Massachusetts at Amherst, 1999
Pronouns: He/him/his

ANDY SISSON: Adjunct Professor of the
Practice
PhD (International Development), Tufts
University, 1983

SHAI TAMARI: Adjunct Instructor
MA (History), UNC, Chapel Hill, 2008

Triangle Center on Terrorism and Homeland Security

TIM NICHOLS: Visiting Professor of the
Practice; Executive Director, Counterterrorism
and Public Policy Fellows Program
MA (American Studies), University of South
Florida, 2000; MBA, NC State, 2010
Pronouns: He/him/his

sanford.duke.edu

Duke

SANFORD SCHOOL of
**PUBLIC
POLICY**